

Introduction:

Fiberdynes 12 Port Associated Hardware, Termination Boxes, Wallmount Bracket, Fusion Splice Trays, Racks, Panels for mounting on surfaces, walls, or racks.

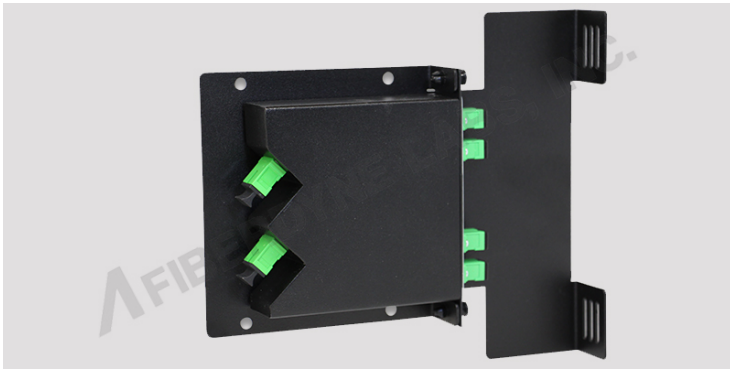
Part Number:	Description:
FST-12	Fiberdyne Labs Fusion Splice Tray, 12 Splice Capacity Dimensions 11"L x 4"W x 0.3"D (28 cm x 10 cm x 0.8cm)
FST-127	Fiberdyne Labs Fusion Splice Tray, Reduced Length 12 Splice Capacity Dimensions 7"L x 4"W x 0.3"D (18 cm x 10 cm x 0.8cm)
FST-18	Fiberdyne Labs Fusion Splice Tray, 18 Splice Capacity Dimensions 11"L x 4"W x 0.3"D (28 cm x 10 cm x 0.8cm)
FST-187	Fiberdyne Labs Fusion Splice Tray, Reduced Length, 18 Splice Capacity Dimensions 7"L x 4"W x 0.3"D (18 cm x 10 cm x 0.8cm)
FP2XX	Fiberdyne Labs Blank Panel
UCC-001	Clamp Kit (needed with term box if loaded fiber)
F12A1	Clamp and Grounding Kit
FLFPS-060	Fiberdyne Labs Fusion Splice Sleeves/50 pack 60mm
FLFPS-040	Fiberdyne Labs Fusion Splice Sleeves/50 pack 40mm



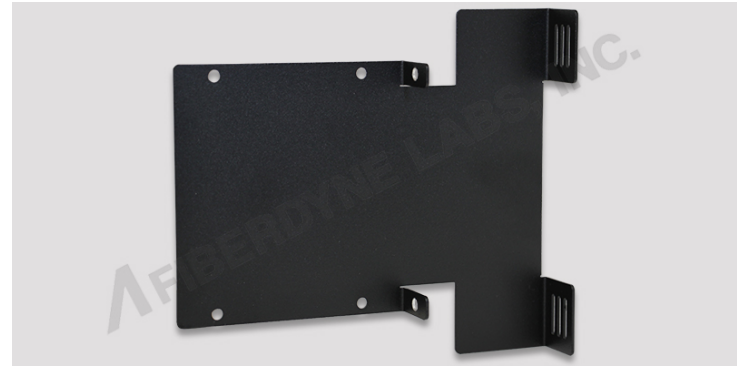
40mm Sleeve



60mm Sleeve



Wallmount Bracket with 1 LGX Module
(Not Included)



Wallmount Bracket

Splice Housing

Part Number:	Description:
RSH-144	Fiberdyne Labs Splice Housing 144 Capacity

Part Number:	Description:
FWB-19-01U	Fiberdyne Labs 1U Wallmount Bracket can be mounted vertically or horizontally.
FWB-19-02U	Fiberdyne Labs 2U Wallmount Bracket can be mounted vertically or horizontally.

Part Number:	Description:
WB-LGX1-CM	Fiberdyne Labs Wallmount Bracket is designed to fit 1 LGX module or panel. It has cable tie off points. (LGX Module/Panel not included.)