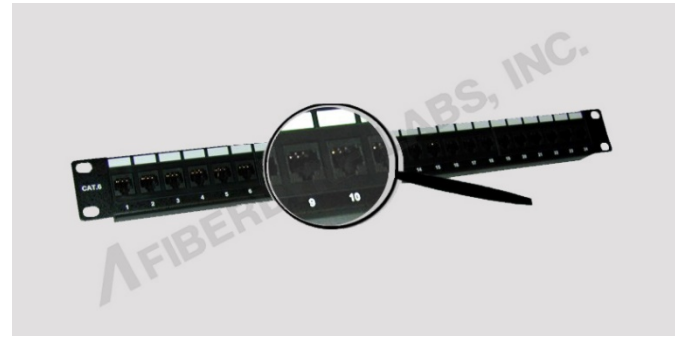


Category 6 Panel

Features:

- - Category 6 Patch Panel
- - High Performance
- - IDC Terminal Block for 110 and Krone
- - 19" Patch Panel, 1U Size
- - Accepts 22-26 AWG. Solid or Stranded Wire
- - Supports T568A/B Wiring Guidelines
- - Meets ISO/IEC 11801



Ordering Information:

Fixed Cat 6 Patch Panel (Traditional)

Part Number	Description
F6E24BPM01	24 Port Patch Panel with 24 modules
F6E48BPM01	48 Port Patch Panel with 48 modules