

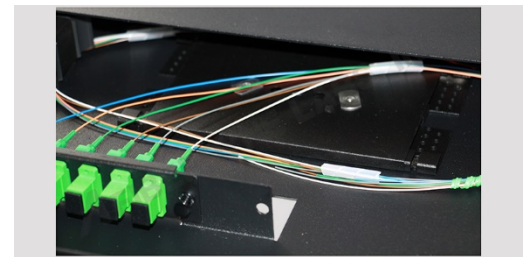
Introduction: The Fiberdyne 1U High Rack Mount Distribution Center holds 2 Fiberdyne LGX Style adapter panels.

Features:

- - A variety of connector panel configurations available
- - Two panels per Fiberdyne Distribution Center
- - Port/fiber counts from 6 to 24 per panel
- - Connector styles include SC, FC, ST, LC and MT-RJ & MPO, along with APC styles of each
- - Includes slots for cable tie downs
- - Reversible Bracket for 19 & 23 inch rackmount
- - Slide out drawer for easy cable management & splicing (Splice tray (or trays) not included)
- - Dimensions: 17" wide x 12" deep x 1.75 inches 1U high



1U High Rack Mount Distribution Center



Close-up of Splice Tray

Specifications:

[Technical Drawing](#)

With SC/UPC SM Connectors

Part Number	Description
FB441A1600000	(1) RTP-1UH, Fiberdyne 1U High Rack Mount Termination Box, Accepts 2 Panels (2) FPA6SCU, Fiberdyne SC/UPC Panel, Pre-Loaded with 6 Simplex SM Adapters

With SC/APC SM Connectors

Part Number	Description
FB441A1B00000	(1) RTP-1UH, Fiberdyne 1U High Rack Mount Termination Box, Accepts 2 Panels (2) FPA6SCA, Fiberdyne SC/APC Panel, Pre-Loaded with 6 Simplex SM Adapters

With FC/UPC SM Connectors

Part Number	Description
FB441A1700000	(1) RTP-1UH, Fiberdyne 1U High Rack Mount Termination Box, Accepts 2 Panels (2) FPA6FCU, Fiberdyne FC/UPC Panel, Pre-Loaded with 6 Simplex SM Adapters

With FC/APC SM Connectors

Part Number	Description
FB441A1A00000	(1) RTP-1UH, Fiberdyne 1U High Rack Mount Termination Box, Accepts 2 Panels (2) FPA6FCA, Fiberdyne FC/APC Panel, Pre-Loaded with 6 Simplex SM Adapters

With ST/UPC SM Connectors

Part Number	Description
FB441A1100000	(1) RTP-1UH, Fiberdyne 1U High Rack Mount Termination Box, Accepts 2 Panels (2) FPA6STU, Fiberdyne ST/UPC Panel, Pre-Loaded with 6 Simplex SM Adapters

With LC/UPC SM Connectors

Part Number	Description
FB441A1C00000	(1) RTP-1UH, Fiberdyne 1U High Rack Mount Termination Box, Accepts 2 Panels (1) FPA12LCS, Fiberdyne LC/UPC Panel, Pre-Loaded with 6 Duplex SM Adapters

With LC/APC SM Connectors

Part Number	Description
FB441A1N00000	(1) RTP-1UH, Fiberdyne 1U High Rack Mount Termination Box, Accepts 2 Panels (1) FPA12LCA, Fiberdyne LC/APC Panel, Pre-Loaded with 6 Duplex SM Adapters

With MTRJ SM Connectors

Part Number	Description
FB441A1M00000	(1) RTP-1UH, Fiberdyne 1U High Rack Mount Termination Box, Accepts 2 Panels (1) FPA12MJS, Fiberdyne MTRJ Panel, Pre-Loaded with 6 Duplex SM Adapters

With SC MM Connectors

Part Number	Description
FB441Q1600000	(1) RTP-1UH, Fiberdyne 1U High Rack Mount, Termination Box, Accepts 2 Panels (2) FPA6SCQ, Fiberdyne SC Panel, Pre-Loaded with 6 Simplex MM Aqua Adapters

With LC MM Connectors

Part Number	Description
FB441Q1C00000	(1) RTP-1UH, Fiberdyne 1U High Rack Mount, Termination Box, Accepts 2 Panels (2) FPA12LCQ, Fiberdyne LC Panel, Pre-Loaded with 6 Duplex MM Aqua Adapters

With SC MM Connectors

Part Number	Description
FB441B2600000	(1) RTP-1UH, Fiberdyne 1U High Rack Mount Termination Box, Accepts 2 Panels (2) FPA6SCM, Fiberdyne SC Panel, Pre-Loaded with 6 Simplex MM Adapters

With ST MM Connectors

Part Number	Description
FB441B2100000	(1) RTP-1UH, Fiberdyne 1U High Rack Mount Termination Box, Accepts 2 Panels (2) FPA6STM, Fiberdyne ST Panel, Pre-Loaded with 6 Simplex MM Adapters

With LC MM Connectors

Part Number	Description
FB441B2C00000	(1) RTP-1UH, Fiberdyne 1U High Rack Mount Termination Box, Accepts 2 Panels (1) FPA12LCM, Fiberdyne LC Panel, Pre-Loaded with 6 Duplex MM Adapters

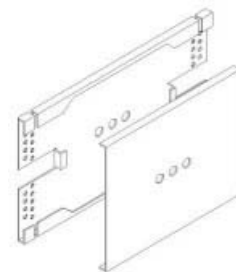
With MTRJ MM Connectors

Part Number	Description
FB441B2M00000	(1) RTP-1UH, Fiberdyne 1U High Rack Mount Termination Box, Accepts 2 Panels (1) FPA12MJM, Fiberdyne MTRJ Panel, Pre-Loaded with 6 Duplex MM Adapters

Options:



[Connector Panel](#)



[FST-187 7 inch Splice Tray](#)