

SC-APC & LC-UPC Attenuators

Highest quality and performance Attenuators



Senko Advanced Components, Inc has conducted a third party GR-910 testing program on its SC APC Attenuator and LC UPC Attenuator to insure it's highest quality and long term reliability.

The GR-910 testing was performed by Exporior Laboratories. The test results show that the attenuators met all of the material, environmental (including tests up to 5,000 hours) and mechanical testing requirements.

The wavelength independent attenuator (wavelength range 1270 to 1650), and the high power resistance design allows customer to use the attenuator for all purpose.

Attenuators are available in:

SC UPC, SC APC, LC UPC, LC APC, FC UPC, FC APC, ST UPC and MU UPC.

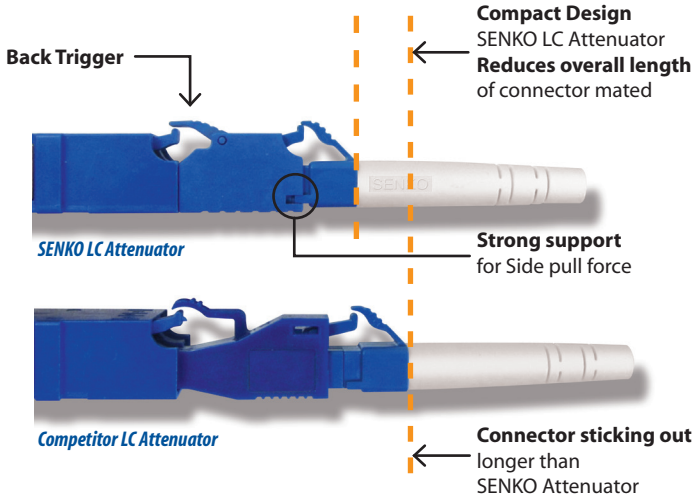
- Tested to GR-910 by Exporior Laboratories, a Verizon certified Independent Test Laboratory
- Wavelength independent premium fiber
- High Optical Power Capacity (up to 500mW)
- Ruggedized and compact LC Unibody design
- Ruggedized SC metal housing

LC & SC Specification

Return Loss	55dB UPC, 65dB APC
Attenuation Tolerance	1 to 10dB; +/-0.5dB, 11 to 30dB +/-5%
Operational Wavelength	1310 +/-40nm, 1490 +/-20nm, 1550 +/-40nM
Max Power	500mw

LC Attenuator

ONE SOLID BODY with NO JOINT Point



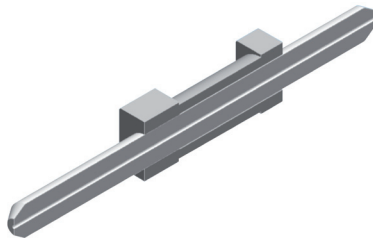
Ferrule Material

- Exceeds requirement of GR 326 Core 4.4.4.5 Immersion / Corrosion Requirement for Ferrule deformation
- One Long Ferrule structure

Housing Material

- Anti Fungus Zero Rating
- UL 94V-0 rated
- ROHS Compliant

Ferrule cross section



Right Process Right material

- One long ferrule structure
- Ferrule material meets GR Ferrule degradation requirements
- Epoxy filled through the ferrule (no Air gap nor air pocket)
- GR Proven S-123 Epoxy

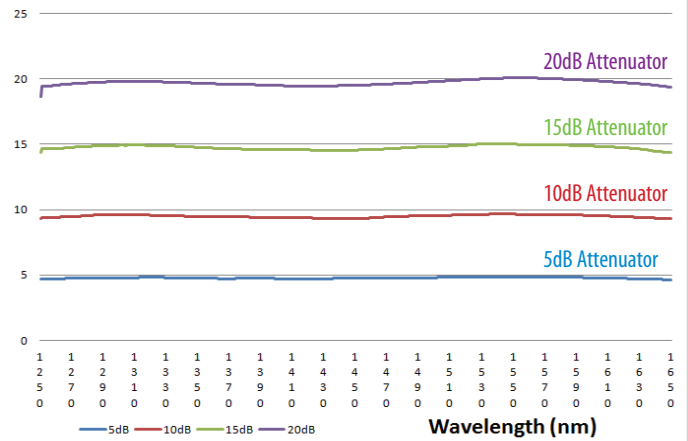
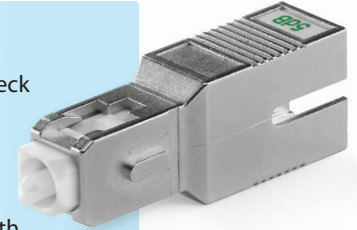
LC Attenuator Features

- 100% ferrule geometry check
- 100% IL and BR Checked
- Continuous Dope fiber
- Ruggedized One piece Unibody
- Back Trigger ready
- Compact design
- Wide operating wave length
- One Long ferrule structure

SC Attenuator

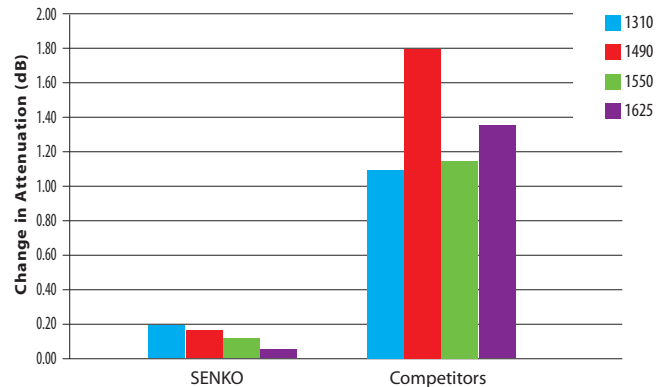
SC Attenuator Features

- 100% ferrule geometry check
- 100% IL and BR Checked
- Continuous Dope fiber
- Ruggedized Metal body
- High TG hook
- Wide operating wave length
- Reduced Gap ferrule design
- High TG Hook meet GR Requirement



LC Attenuator Comparison.

Average Change in Attenuation During 90° Side Pull



SENKO ADVANCED COMPONENTS, INC.

Americas

USA EAST 1-888-32-SENKO
USA WEST 1-858-623-3300
Sales-Americas@senko.com

Asia

HONG KONG +852-2121-0516
SHANGHAI +86-21-5830-4513
SHENZHEN +86-755-2533-4893
WUHAN +86-27-8725-9057
Sales-Asia@senko.com

Europe

UK +44 (0) 118 982 1600
ITALY +39 011 839 9828
POLAND +48-71/77-60-737
Sales-Europe@senko.com

Asia Pacific

AUSTRALIA +61 (0) 3 9755-7922
Sales-Asia-Pacific@senko.com

Middle East North Africa

Dubai +971 4 8865160
Sales-MENA@senko.com

Japan

TOKYO +81 (0) 3 5825-0911
Sales-Japan@senko.com

CALL 1-888-32-SENKO

www.senko.com