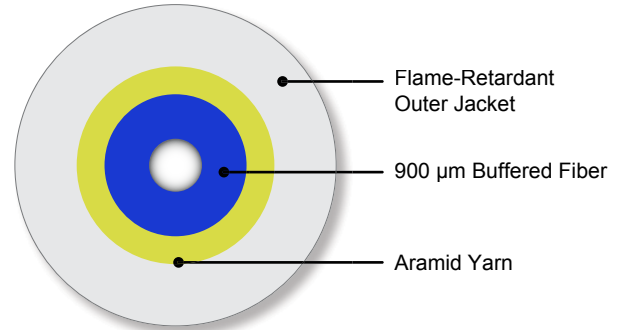


EZ-Bend® 4.8 & 3.0 Ruggedized Cables



A Furukawa Company

With the new **EZ-Bend® 3.0 Ruggedized Cable**, users have expanded options for **MDU, in-home wiring and aggressive, space-constrained routing environments**. When a low profile and durability are needed, select the new 3.0 mm product. For more demanding deployments, the **EZ-Bend® 4.8 Ruggedized Cable** is ideal. EZ-Bend cables are offered in indoor/outdoor, riser, plenum, and dual-rated low-smoke zero-halogen (LSZH) constructions, and **can be routed around corners and stapled** using traditional fast and easy copper wire installation practices, with negligible signal loss.



EZ-Bend Ruggedized Optical Cable Cross-Section

Features:

- 3.0 and 4.8 diameter ruggedized cordage
- Less than 0.1 dB macrobending attenuation at 1550 nm for 1 turn at 5 mm fiber bend radius
- Less than 0.3 dB macrobending attenuation at 1550 nm when subjected to MDU Simulation Test called out by Verizon TPR.9424 FOC Document
- Solid construction fiber with macrobending performance far better than ITU G.657B requirements
- Backward compatible with installed G.652D fibers
- Conform to UL® Riser and Plenum fire ratings
- Compliant with Telcordia 409 & ICEA S-83-596 requirements
- Dry water-blocked core to protect against water ingress
- Reinforced solid jacket construction naturally limits cable bending to control macrobending attenuation and protect fiber reliability

Benefits:

- **“Copper-like” installation process:** Can be routed around corners using familiar copper wire practices, and stapled
- **Faster, easier installation:** no extra steps to install bend limiters, conduits, or raceways
- **Compact installation and storage:** Conforms to building; slack fits in small spaces
- **Fast, easy, low loss splicing** to G.652D fiber with existing core and clad aligned splice equipment
- **Familiar, standard connector termination:** Solid fiber construction can be terminated using standard optical connectors and polishing techniques
- **Familiar connector endface cleaning** using same process as with existing G.652 solid construction fiber
- **Greener Solution:** Free of heavy metals and RoHS-compliant; solution uses fewer total materials and energy than copper solutions

Performance

Flame Performance	Mechanical and Environmental Performance	Temperature Range
Riser: UL 1666 compliant	Telcordia GR-409, ICEA S-83-596 compliant	Installation: 32° F to 104° F (0° C to 40° C)
Plenum: NFPA 262 (UL 910) compliant		Operation: -40° F to 158° F (-40° C to 70° C)
Dual Rated: IEC-3C and UL 1666		Storage: -40° F to 158° F (-40° C to 70° C)
Non-Halogen: IEC 60332-3c and IEC 61034-2 compliant		
Maximum Tensile Rating N (lb) - All Cables	440 N (100 lb)	
Attenuation @	1310 nm	1550 nm
Maximum Attenuation	0.4 dB/km	0.3 dB/km
Typical Attenuation	0.35 dB/km	0.25 dB/km

Product Information

Cable Type	Flame Rating	Part Number	Nominal Weight kg/km (lb/100 ft)
Indoor/Outdoor Cables			
3.0 Indoor/Outdoor Riser	UL 1666	IR30-001C-DRK-4	7.60 kg/km (0.51 lb/100 ft)
4.8 Indoor/Outdoor Riser	UL 1666	IO48-001C-DRK-4-PVC	22.0 kg/km(1.48 lb/100 ft)
4.8 Dual-Rated* Indoor/ Outdoor LSZH	IEC 60332-3C & UL 1666	IO48-001E-DDK-4-UVB	22.9 kg/km (1.53 lb/100 ft)
Indoor Cables			
4.8 Indoor Riser	UL 1666	9P48-001-C-DRW-4	20.3 kg/km (1.36 lb/100 ft)
4.8 Indoor Plenum	NFPA 262 (UL 910)	9P48-001C-DPW-4	24.5 kg/km (1.65 lb/100 ft)
4.8 Dual-Rated* Indoor LSZH	IEC 60332-3C & UL 1666	9U48-001E-DDW-4	24.8 kg/km (1.67 lb/100 ft)

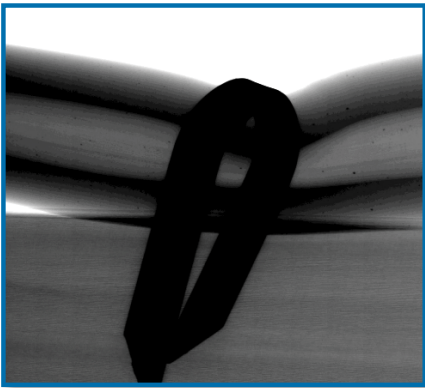
* Dual-Rated Cables are rated for both riser and LSZH application use.

NOTE: Standard color for Indoor cables is a white jacket. Standard color for Indoor/Outdoor cables is a black jacket. Please note that other jacket colors are available upon customer request.

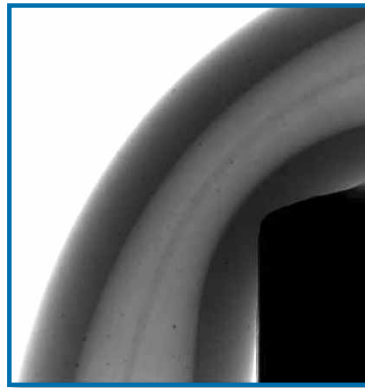
Example of Standard Sheath Marking [Custom sheath marking available upon request]

White-Jacketed Riser-Rated 4.8 Ruggedized Drop Cable with EZ-Bend Technology:

OFS INTERCONNECT EZ-BEND® G.657.B3 OPTICAL CABLE -C- 9P48-001C-
DRW-4 9/125 C(UL) US TYPE OFNR [CSA OFN FT4] {MM/YY} {LOT NUMBER}
{LENGTH IN FEET}



Aggressive stapling:
19 mm bend radius for fiber
(minimal bending)



90-degree bend, stapled 3/4" from
corner: 5 lb tension, 5.5 mm fiber
bend radius

X-Ray of bent and stapled EZ-Bend 4.8 Optical Cable

EZ-Bend is a registered trademark of OFS Fitel, LLC.

UL is a registered trademark of Underwriters Laboratories Inc.

For additional information, please contact your sales representative.

You can also visit our website at www.ofsoptics.com or call 1-888-fiberhelp (1-888-342-3743) from inside the USA or 1-770-798-5555 from outside the USA.

OFS reserves the right to make changes to the prices and product(s) described in this document at any time without notice. This document is for informational purposes only and is not intended to modify or supplement any OFS warranties or specifications relating to any of its products or services.

Copyright © 2013 OFS Fitel, LLC.

All rights reserved.

OFS

Marketing Communications

fap-251-1013



A Furukawa Company